

We have a vision...

“Making a difference in our community with Christ’s message of hope”



A vision that addresses a serious situation...

...People are living far below their God-given design

Only with Jesus can that be changed



“The thief comes only to steal and kill and destroy; I have come that they may have life, and have it to the full.”

John 10:10 NIV

“ There is salvation in no one else! God has given no other name under heaven by which we must be saved.”

Acts 4:12 NLT

(but you already know that because Jesus has set YOU free) 😊

In our community, however, there is a **DISCONNECT** because some people **KNOW** they are empty inside but they **DON'T KNOW** Jesus while others are just blissfully **IGNORANT**

GOD has a solution for that too!

- ✳️ “The Spirit of the Sovereign Lord is upon me, for the Lord has anointed me to bring good news to the poor. ...” (Isaiah 61:1)
- ✳️ But you will receive power when the Holy Spirit comes upon you. And you will be my witnesses, telling people about me everywhere...” (Acts 1:8)
- ✳️ So we are Christ’s ambassadors; God is making his appeal through us. We speak for Christ when we plead, “Come back to God!” (2 Corinthians 5:20)



Together as Spirit-filled, Spirit-led people living as representatives for God we set before ourselves a MISSION to “help people discover the fullness of life in Christ.”

1 Team
Mission
Message

MISSIONAL STRATEGY

In order to be effective in our effort and efficient with our resources the leadership team of the Pastor, Board and Staff are organizing LCF's ministries around 3 core areas



Ministries that *encourage* people to seek and embrace the presence and power of Jesus Christ through the work of the Holy Spirit.



Priority areas

- Sunday Services
- Prayer Meetings
- Special Services, Retreats, etc.

Ministries that equip people to grow in knowledge of the Word and sensitivity to the Spirit so that we may LIVE, LOVE and LEAD like JESUS.



Priority areas

- Life Groups
- Training Courses
- Pastoral Care

Initiatives that engage people in the great commission and in keeping with their gifts to serve the Church so that it is built up.



Priority areas

- Our Next Generation
- Meeting Community Needs (ie: Food Bank)
- Global Impact

2020 Vision



what we see being accomplished by the year 2020

1

Facilities

The 2020 Vision for facilities includes removing the modulars and the food bank containers and building a new 4,500 sq ft, 2 story community ministry centre. Additionally repurposing the current childcare area into a foyer/ministry space and completing paving and landscaping of the back lot.

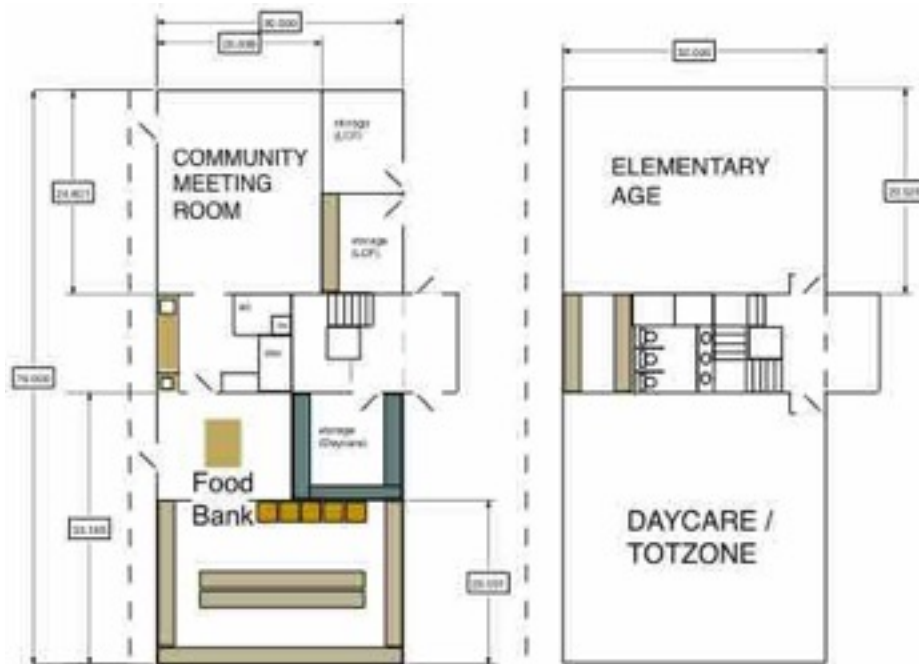
- ◆ Rough guesstimate cost of \$600,000
- ◆ Balance on current mortgage: \$135,000

2

Community Impact

The second component of our 2020 Vision is to have planted in our region a new spiritual community by the year 2020. This vision redirects the long range plan from expanding the current auditorium space and priorities instead the multiplying of services through new spiritual communities.

- ◆ Format: TBD
- ◆ Location: TBD



FEEDBACK

Here is how you can give us feedback:

1. Articulate your thoughts on a letter or an e-mail. Address it to the pastor or to the board.
2. Stay for the Youth's Soup & Bunraiser on October 18th and join a table discussion with one of our board members.
3. Talk personally with one of the board members or staff
4. Look for one of our leadership team to visit your life group in the near future to get your feedback.

Reflection Questions

- GENERAL QUESTIONS:
 - What evidence do you see of people living below their God-given design?
 - Have you been in a position lately to make a difference?
 - In what ways could LCF better resource you for making a difference?
 - What training could LCF provide to help you in your witness?
 - What activities or events could LCF sponsor that would aid you in connecting with your neighbours?
 - If someone expressed interest in spiritual matters and wanted to try going to church would you invite them to LCF? Why or Why not?
- CREATING A NEW SPIRITUAL COMMUNITY IN OUR REGION
 - What areas (geographical, social, ethnic, etc.) within our region, could be potential candidates for a new spiritual community?
 - What strengths at LCF could we leverage in developing a new community?
 - What do you think we should NOT do as we move forward in this direction?
- BUILDING A NEW COMMUNITY MINISTRY CENTRE
 - What financing boundaries would you feel comfortable with LCF pursuing?
 - How do you feel about enlisting the community's support in funding this building?
 - What design elements do you think should be considered in a new facility?
 - What opportunities could an expanded foyer create?